



TENAXPANEL

WHAT'S NEW



New production line

[read more](#)



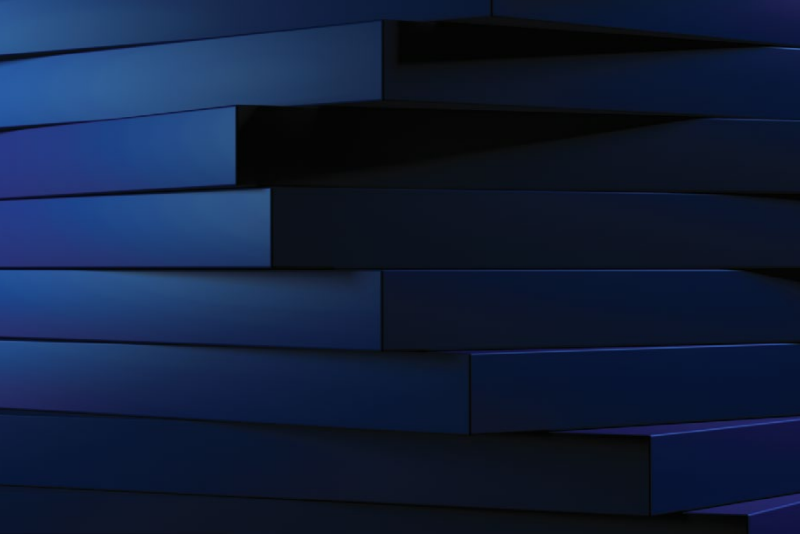
Roofs with OVERLAP

[read more](#)



Tekla Structural in use

[read more](#)



An **intensive fire resistance testing** has been performed for all wall panels with mineral wool in 2019 giving excellent balance between panel performance and price.

The quality of the roof panels with mineral wool core has been **improved remarkably**. Now the roof panels TENAX TR MW are manufactured on the new production line and the latest results of fire resistance obtained at the end of 2019 / beginning of 2020 are also applicable to the Nordic countries **with significant snow loads**.

ADVANTAGES



project management support
during construction



high quality raw materials using environmentally compatible metal coatings: C5, Food safe etc.



possibility to produce **panels of different widths** – 1.2 m, 1.1 m, 1.15 m, 1 m – according to project requirements



panels are delivered with **complementary elements** (flashings, screws etc.)



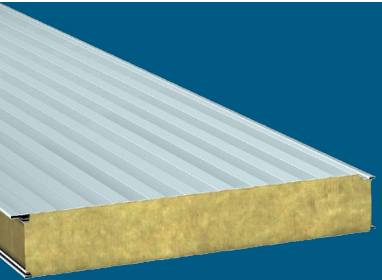
panel **joints are fully compatible** with each other (MW, PIR, PUR and EPS)



Security class panels

NEW WALL PANEL PRODUCT LINE

A new wall panel product line has been developed in 2019. The panels TENAX W MW STRONG are **intended for the walls in the areas with higher wind loads**. The new products together with standard wall panels TENAX W MW and more energy-efficient panels TENAX W MW Thermo Plus can provide versatile solutions for the Baltics and for the Nordic countries.



**TENAX
W MW
STRONG**



Danske Retursystem raw material processing plant Taastrup, Danmark

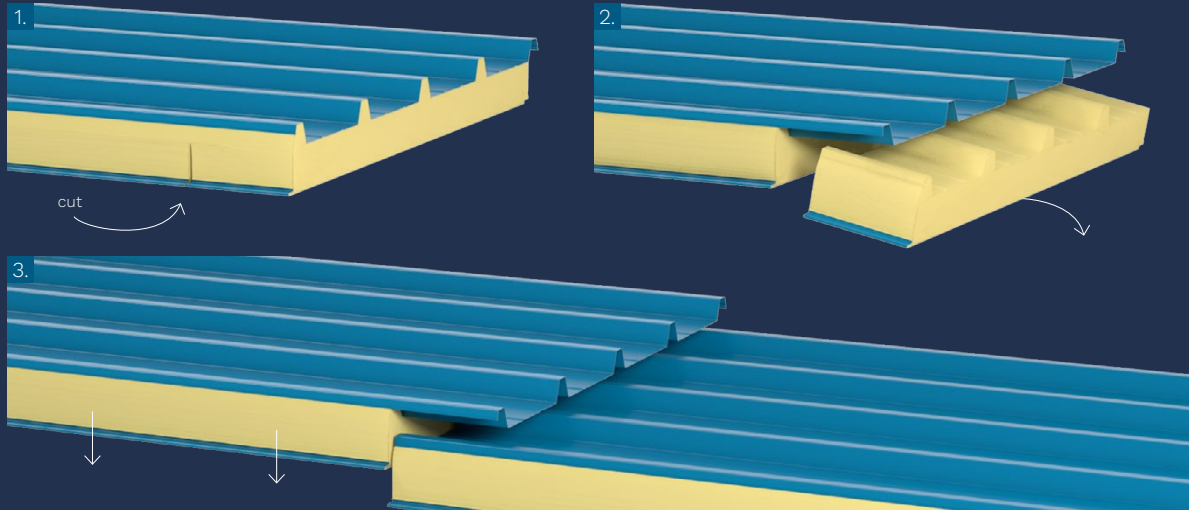
NOVELTY – ROOFS WITH OVERLAP

For more convenient installation of long roof spans, we have started to offer roof panels with OVERLAP – a pre-fabricated cut in PIR or MW insulation that **saves time and resources on installation**. The roof panels with overlap are now available both for panels with mineral wool core and PIR core.



Stein Gård, Moelv, Norway

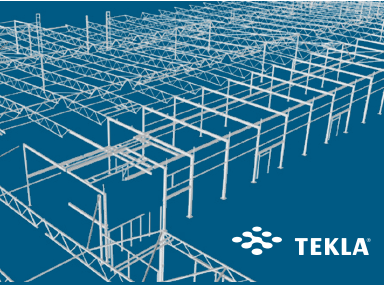
A CLEVER SOLUTION



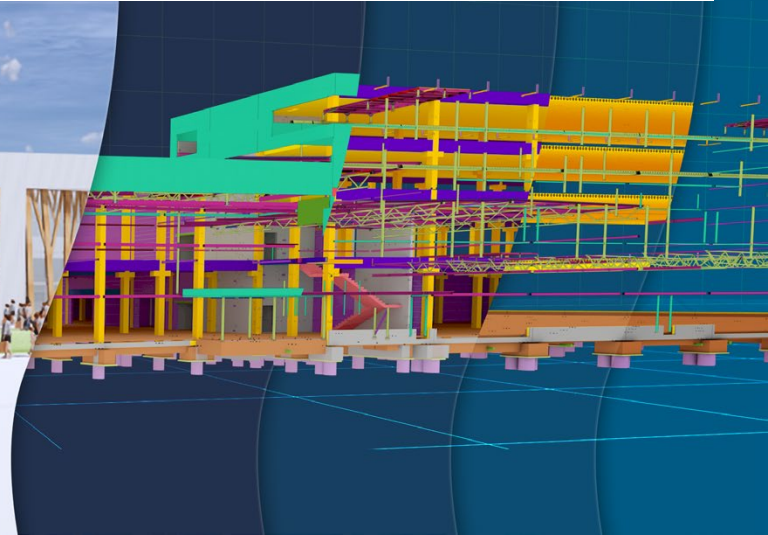
INNOVATION – TEKLA STRUCTURES SOFTWARE

During 2019 our engineers started to work with Tekla Structures. This program allows to work with 3D projects, **performs quick volume and load calculations**, quickly detects and verifies errors, **easily makes changes in layouts**.

Find out more



**MORE
OPPORTUNITIES**



REFERENCES



Fulfillment center “Lidostas Parks”, LATVIA

Built in 2019, using SP Tenax W 150 PIR,
SP Tenax W 150 MW, SP Tenax W 200 MW.

Sandwich panels covering 7,707 m²



Priisle Business Park, Tallinn, ESTONIA

Built in 2018, using SP TENAX W 150 PIR
T un SP TENAX W 100 PIR T

Sandwich panels covering 3,010 m²



Cogeneration power plant, Kaunas, LITHUANIA

Built in 2019, using Tenax W 240 MW
T2 sandwich panels with PVDF steel
coating and steel of 0.6 mm thickness,
providing the building with A+ energy
efficiency requirements.

Sandwich panels covering 15,000 m²



RIMI Expanded Warehouse, Riga, LATVIA

The object is currently under
construction. SP Tenax W MW, SP Tenax
W PIR panels are used in the object.

Sandwich panels covering 36,000 m²

REFERENCES



Cold storage, Reykjavik, ICELAND

30m high food safe cold storage. Built in 2019, using SP Tenax W 150 PIR, SP Tenax W 150 MW, SP Tenax W 200 MW.

Sandwichpanels covering 18,000 m²



DSV logistics center, DANMARK

The object is currently under construction. SP TENAX W 150 MW panels are used in the object, aluminum facades.

Sandwichpanels covering 36,000 m²



Pelagic fish processing plant, Fjarðanet, ICELAND

Built 2019, using SP TENAX W MW S/T, TENAX W PIR S/T, TENAX TR PIR S

Sandwichpanels covering 7,800 m²



ESS Campus, SWEDEN

Construction started in 2019, using SP TENAX W MW S/T – one of the largest science and technology infrastructure projects under construction today

Sandwichpanels covering 3,500 m²



Tenax Dobele – five-time Latvian champions



SUPPORTING HANDBALL!

Many outstanding handball players have come from Dobele. They have played and are still playing in German and Swiss leagues and we have supported them ever since 1996!

Hoping for further cooperation!



Tenax Panel Ltd.
1 Spodribas Street, Dobele
Latvia, LV-3701

