

Code	Description
<input checked="" type="checkbox"/> 201	Wall panels TENAX W H
<input type="checkbox"/> 401-1	Sealing tape, one-side self adhering, thickness t=3 mm, width b=30 mm
<input type="checkbox"/> 501-1	Screws for panel fastening, self-drilling, for steel structures with web thickness up to 12 mm (c/c ≤ 500 mm)
<input type="checkbox"/> 502-1	Screws for panel fastening, for timber structures (c/c ≤ 500 mm)
<input type="checkbox"/> 503-1	Screws for panel fastening, for concrete structures (c/c ≤ 500 mm)
<input checked="" type="checkbox"/>	Included in the supply



"TENAXPANEL" Ltd  
Spodribas street 1, Dobeles, LV-3701, Latvia  
Phone: +371 63720957

Detail number:  
SP-487-1-en

Detail name:

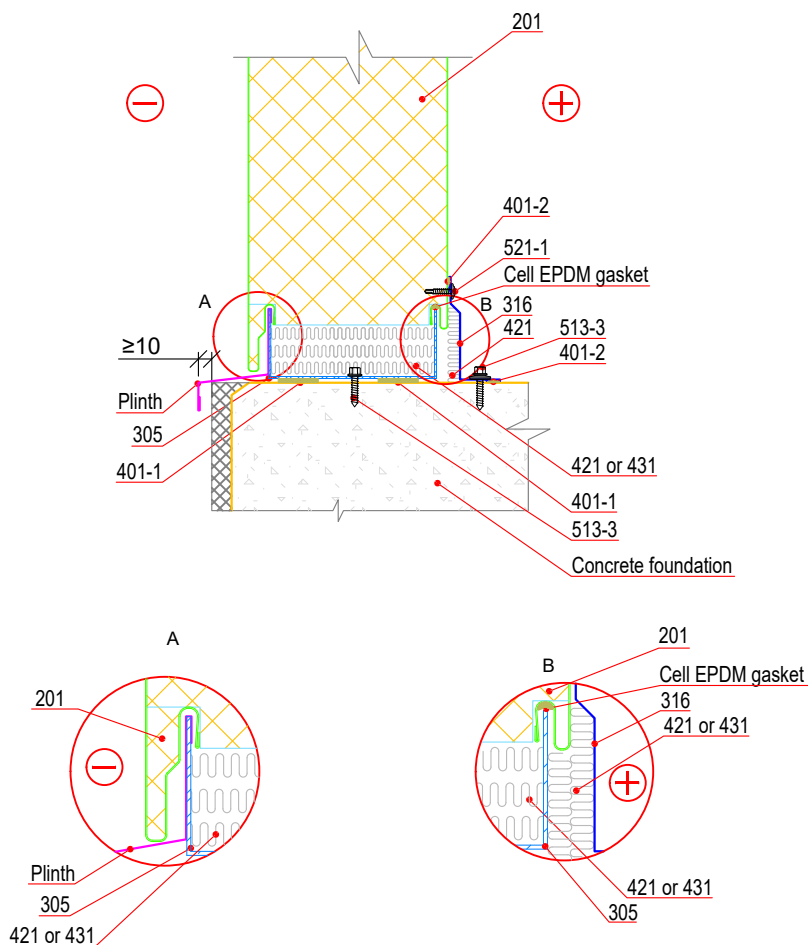
TENAX W H.  
Horizontal assembly.

Detail type:

Wall

Scale:  
1:5

Date:  
January 2019



Code	Description
<input checked="" type="checkbox"/> 201	Wall panels TENAX W H
<input checked="" type="checkbox"/> 305	Support profile, UPH
<input checked="" type="checkbox"/> 316	Skirting, KF
<input checked="" type="checkbox"/> 401-1	Sealing tape, one-side self adhering, thickness t=3 mm, width b=30 mm
<input checked="" type="checkbox"/> 401-2	Sealing tape, one-side self adhering, thickness t=3 mm, width b=9 mm
<input checked="" type="checkbox"/> 421	Mineral wool, in strips
<input checked="" type="checkbox"/> 431	Installation foam
<input checked="" type="checkbox"/> 513-3	Screws for fixing of details to concrete structure (c/c ≤ 500 mm)
<input checked="" type="checkbox"/> 521-1	Screws for fixing of flashings to panels (c/c ≤ 500 mm)
<input checked="" type="checkbox"/>	Included in the supply
UPH profile has to be installed 8 ± 1 mm from column	



"TENAXPANEL" Ltd  
Spodribas street 1, Dobeles, LV-3701, Latvia  
Phone: +371 63720957

Detail number:  
SP-488-1-en

Detail name:

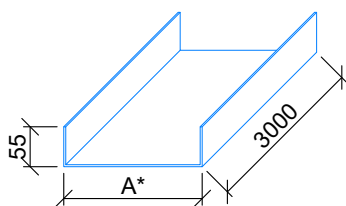
TENAX W H. Horizontal assembly.  
Fixing to concrete foundation.

Detail type:  
Wall

Scale:  
1:5

Date:  
January 2019

Code	Description
305	Support profile, UPH



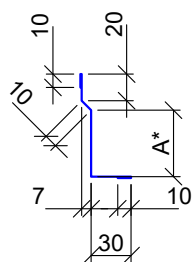
Steel sheet thickness 1,5 mm

Coating: Zinc Z275

Length: 3,0 m

Panel thickness	50	80	100	120	150	175	200	240
A*	32	62	81	101	129	154	178	218
Steel sheet width	142	172	191	211	239	264	288	328

Code	Description
316	Skirting, KF



Steel sheet thickness 0,5; 0,6 mm

Coating: the same as panel coating

Length: 2,4 m

A*	50	60	80
Steel sheet width	132	142	162

\* Other widths possible by individual request

Code	Description
-	Plinth



Steel sheet thickness 0,5; 0,6 mm

Coating: the same as panel coating

Length: 2,4 m

Measures vary depending  
on the foundation!



"TENAXPANEL" Ltd  
Spodribas street 1, Dobeles, LV-3701, Latvia  
Phone: +371 63720957

Detail number:  
SP-488-1-en

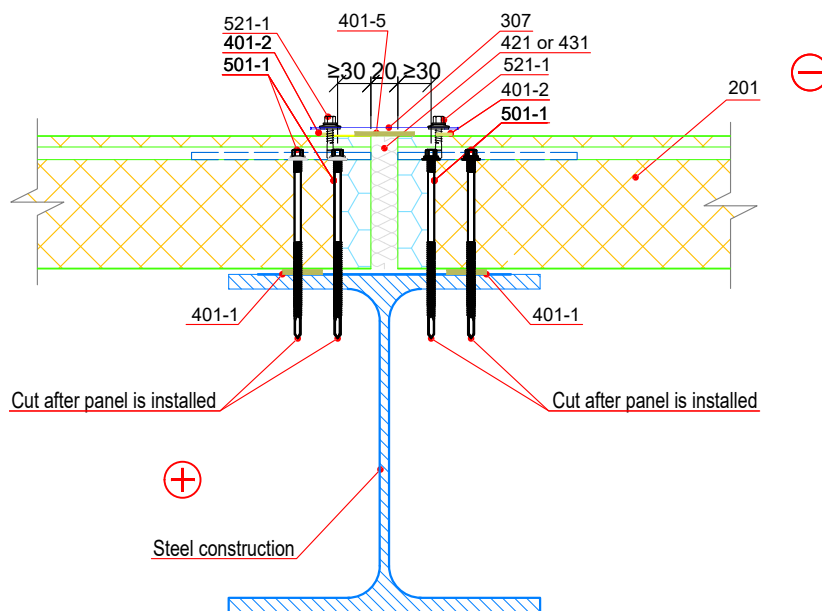
Detail name:

TENAX W H. Horizontal assembly.  
Fixing to concrete foundation (Flashings).

Detail type:  
Wall

Scale:  
1:5

Date:  
January 2019



Code	Description
<input checked="" type="checkbox"/> 201	Wall panels TENAX W H
<input type="checkbox"/> 307	Butt joint flashing for wall panels, Al
<input type="checkbox"/> 401-1	Sealing tape, one-side self adhering, thickness t=3 mm, width b=30 mm
<input type="checkbox"/> 401-2	Sealing tape, one-side self adhering, thickness t=3 mm, width b=9 mm
<input type="checkbox"/> 401-5	Acrylic sealing tape, b=60mm
<input type="checkbox"/> 421	Mineral wool, in strips
<input type="checkbox"/> 431	Installation foam
<input type="checkbox"/> 501-1	Screws for panel fastening, self-drilling, for steel structures with web thickness up to 12 mm (c/c ≤ 500 mm)
<input type="checkbox"/> 521-1	Screws for fixing of flashings to panels (c/c ≤ 500 mm)
<input checked="" type="checkbox"/>	Included in the supply

- (a) For steel structures with web thickness t>12mm predrill holes for screw (501) fixing  
(b) The given support width can vary depending on wind loads



"TENAXPANEL" Ltd  
Spodribas street 1, Dobeles, LV-3701, Latvia  
Phone: +371 63720957

Detail number:  
**SP-489-1-en**

Detail name:

TENAX W H. Horizontal assembly.  
Fixing to steel column in length.

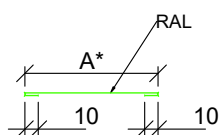
Detail type:

Wall

Scale:  
1:5

Date:  
January 2019

Code	Description
307	Butt joint flashing for wall panels, Al



Steel sheet thickness 0,5; 0,6 mm  
Coating: the same as panel coating  
Length: 2,4 m

A*	50	100	120	150	200
Steel sheet width	70	120	140	170	220

\* Other widths possible by individual request



"TENAXPANEL" Ltd  
Spodribas street 1, Dobeles, LV-3701, Latvia  
Phone.:+371 63720957

Detail number:  
SP-489-1-en

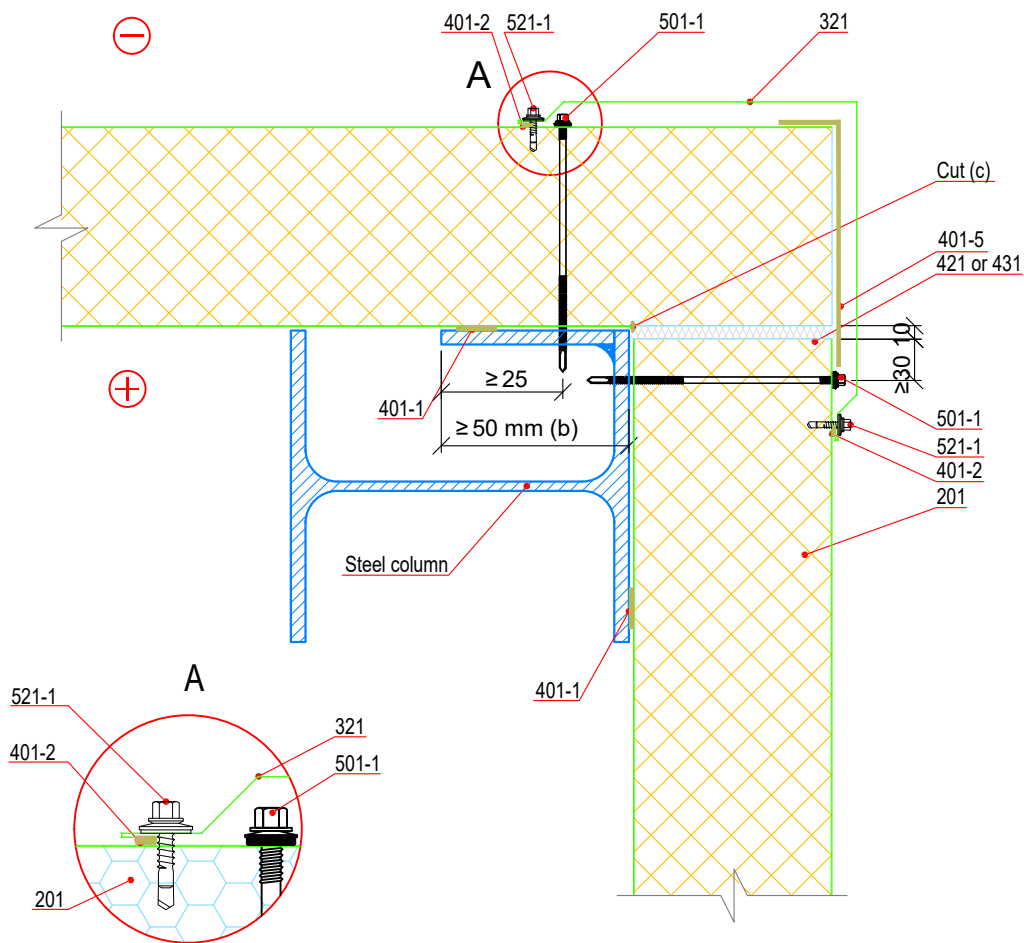
Detail name:

TENAX W H. Horizontal assembly.  
Fixing to steel column in length (Flashings).

Detail type:  
Wall

Scale:  
1:5

Date:  
January 2019



Code	Description
<input checked="" type="checkbox"/> 201	Wall panels TENAX W H
<input type="checkbox"/> 321	External corner flashing, CF
<input type="checkbox"/> 401-1	Sealing tape, one-side self adhering, thickness t=3 mm, width b=30 mm
<input type="checkbox"/> 401-2	Sealing tape, one-side self adhering, thickness t=3 mm, width b=9 mm
<input type="checkbox"/> 401-5	Acrylic sealing tape, b=150mm x 2
<input type="checkbox"/> 421	Mineral wool, in strips
<input type="checkbox"/> 431	Installation foam
<input type="checkbox"/> 501-1	Screws for panel fastening, self-drilling, for steel structures with web thickness up to 12 mm (c/c ≤ 500 mm)
<input type="checkbox"/> 521-1	Screws for fixing of flashings to panels (c/c ≤ 500 mm)
<input checked="" type="checkbox"/>	Included in the supply

- (a) For steel structures with web thickness  $t > 12$  mm predrill holes for screw (501) fixing  
(b) The given support width can vary depending on wind loads  
(c) Cut for thermal break at the distance from panel end equal to panel thickness



"TENAXPANEL" Ltd  
Spodribas street 1, Dobeles, LV-3701, Latvia  
Phone: +371 63720957

Detail number:  
**SP-490-1-en**

Detail name:

TENAX W H. Horizontal assembly.  
Fixing to steel column at external corner - Option 1.

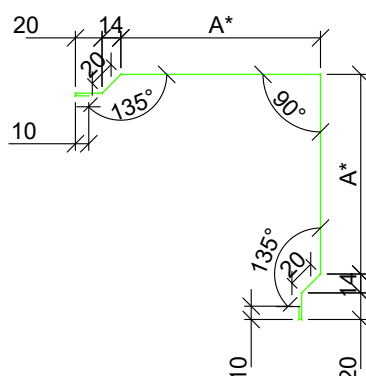
Detail type:

Wall

Scale:  
1:5

Date:  
January 2019

Code	Description
321	External corner flashing, CF



Steel sheet thickness 0,5; 0,6 mm  
Coating: the same as panel coating  
Length: 2,4 m

Panel thickness	50	80	100	120	150	175	200	240	300
A*	120	150	170	190	220	245	270	310	370
Steel sheet width	340	400	440	480	540	590	640	720	840

\* Other widths possible by individual request



"TENAXPANEL" Ltd  
Spodribas street 1, Dobeles, LV-3701, Latvia  
Phone.:+371 63720957

Detail number:  
SP-490-1-en

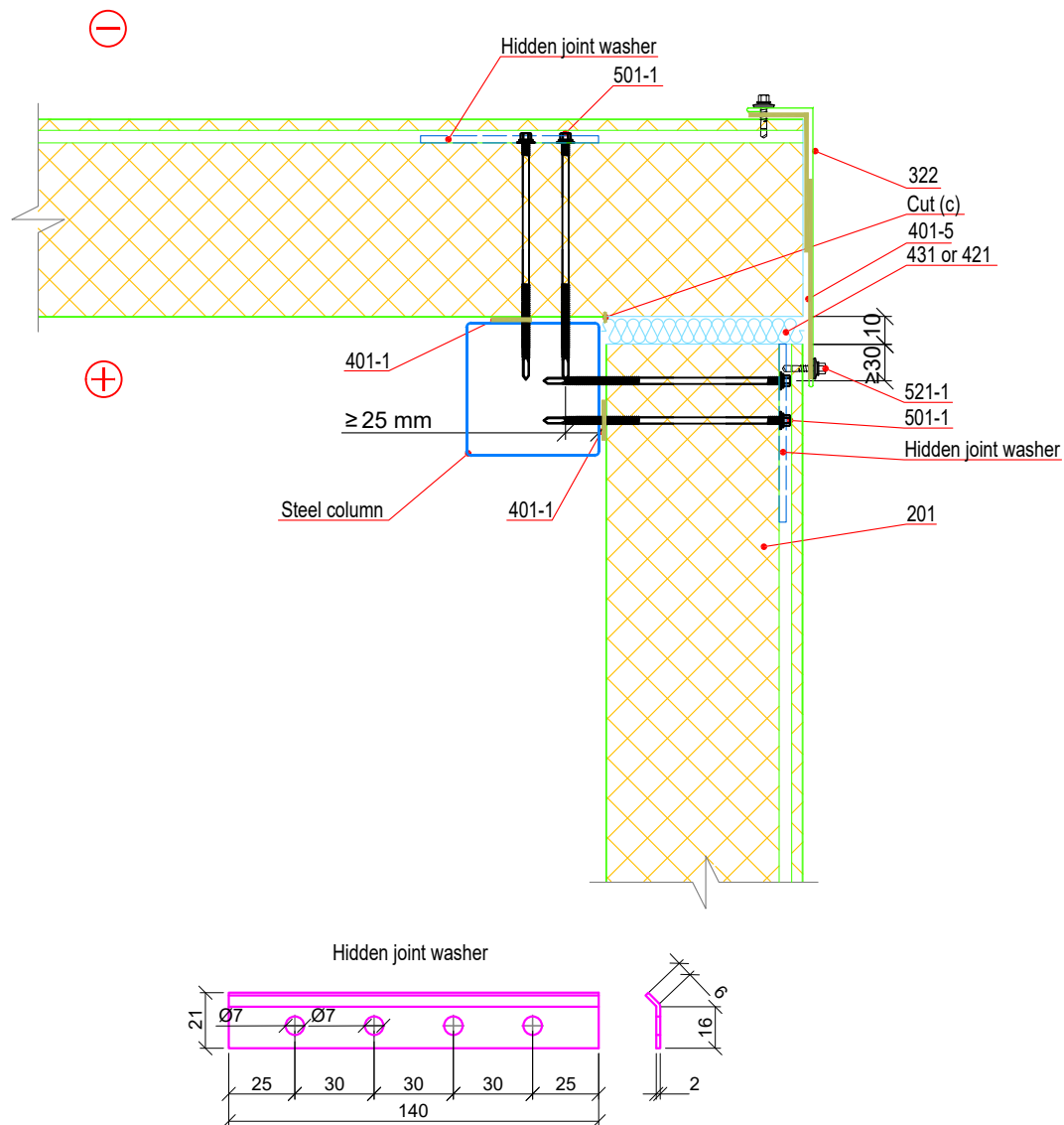
Detail name:

TENAX W H. Horizontal assembly.  
Fixing to steel column at external corner - Option 1.

Detail type:  
Wall

Scale:  
1:5

Date:  
January 2019



NOTE! EPDM washer has to be taken away from screw.

Code	Description
<input checked="" type="checkbox"/> 201	Wall panels TENAX W H
<input type="checkbox"/> 322	DF, Corner flashing
<input type="checkbox"/> 401-1	Sealing tape, one-side self adhering, thickness t=3 mm, width b=30 mm
<input type="checkbox"/> 401-2	Sealing tape, one-side self adhering, thickness t=3 mm, width b=9 mm
<input type="checkbox"/> 401-5	Acrylic sealing tape b=150mm x 2
<input type="checkbox"/> 421	Mineral wool, in strips
<input type="checkbox"/> 431	Installation foam
<input type="checkbox"/> 501-1	Screws for panel fastening, self-drilling, for steel structures with web thickness up to 12 mm (c/c ≤ 500 mm)
<input type="checkbox"/> 521-1	Screws for fixing of flashings to panels (c/c ≤ 500 mm)

☒ Included in the supply

- (a) For steel structures with web thickness  $t > 12$  mm predrill holes are needed for screw (501) fixing  
 (b) Given support width can vary depending on wind loads  
 (c) Cut for thermal break at the distance from panel end equal to panel thickness



"TENAXPANEL" Ltd  
 Spodribas street 1, Dobeles, LV-3701, Latvia  
 Phone: +371 63720957

Detail number:  
 SP-491-1-en

Detail name:

TENAX W H. Horizontal assembly.  
 Fixing to steel column at external corner - Option 2.

Detail type:

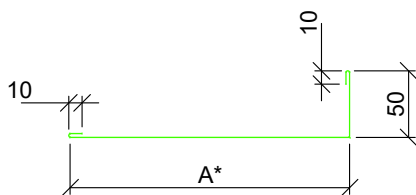
Wall

Scale:  
 1:5

Date:  
 January 2019



Code	Description
322	DF, Corner flashing



Steel sheet thickness 0,5; 0,6 mm  
Coating: the same as panel coating  
Length: 2,4 m

Panel thickness	50	80	100	120	150	175	200	240	300
A*	110	140	160	180	210	235	260	300	360
Steel sheet width	180	210	230	250	280	305	330	370	430

\* Other widths possible by individual request



"TENAXPANEL" Ltd  
Spodribas street 1, Dobeles, LV-3701, Latvia  
Phone.:+371 63720957

Detail number:  
SP-491-1-en

Detail name:

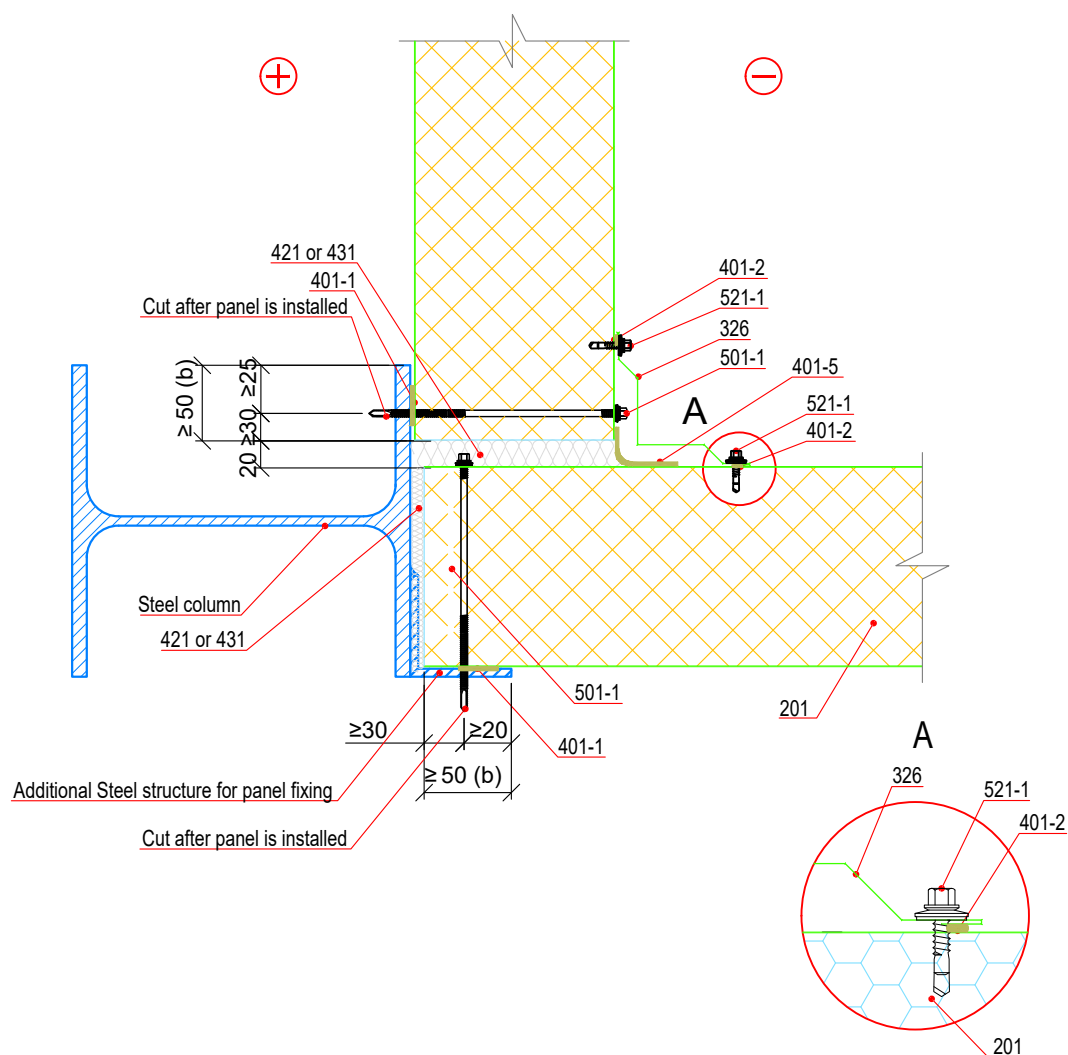
TENAX W H. Horizontal assembly.  
Fixing to steel column at external corner - Option 2 (Flashings).

Detail type:

Wall

Scale:  
1:5

Date:  
January 2019



Code	Description
<input checked="" type="checkbox"/> 201	Wall panels TENAX W H
<input type="checkbox"/> 326	Internal corner flashing, IF
<input type="checkbox"/> 401-1	Sealing tape, one-side self adhering, thickness $t=3$ mm, width $b=30$ mm
<input type="checkbox"/> 401-2	Sealing tape, one-side self adhering, thickness $t=3$ mm, width $b=9$ mm
<input type="checkbox"/> 401-5	Acrylic sealing tape, $b=60$ mm
<input type="checkbox"/> 411-1	Construction sealant (neutral) (Outside neutral silicone/inside butil sealant, white color)
<input type="checkbox"/> 421	Mineral wool, in strips
<input type="checkbox"/> 431	Installation foam
<input type="checkbox"/> 501-1	Screws for panel fastening, self-drilling, for steel structures with web thickness up to 12 mm ( $c/c \leq 500$ mm)
<input type="checkbox"/> 521-1	Screws for fixing of flashings to panels ( $c/c \leq 500$ mm)

- ☒ Included in the supply
- (a) For steel structures with web thickness  $t > 12$  mm predrill holes for screw (501) fixing
- (b) The given support width can vary depending on wind loads



"TENAXPANEL" Ltd  
Spodribas street 1, Dobele, LV-3701, Latvia  
Phone: +371 63720957

Detail number:  
SP-492-1-en

Detail name:

TENAX W H. Horizontal assembly. Fixing to steel column at internal corner.

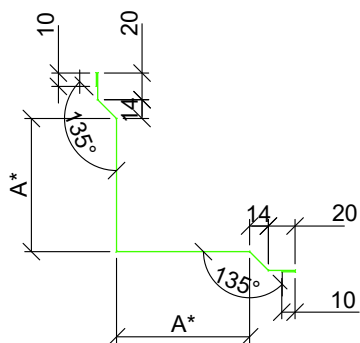
Detail type:

Wall

Scale:  
1:5

Date:  
January 2019

Code	Description
326	Internal corner flashing, IF



Steel sheet thickness 0,5; 0,6 mm  
Coating: the same as panel coating  
Length: 2,4 m

A*	50	100	150
Steel sheet width	200	300	400

\* Other widths possible by individual request



"TENAXPANEL" Ltd  
Spodribas street 1, Dobeles, LV-3701, Latvia  
Phone.:+371 63720957

Detail number:  
SP-492-1-en

Detail name:

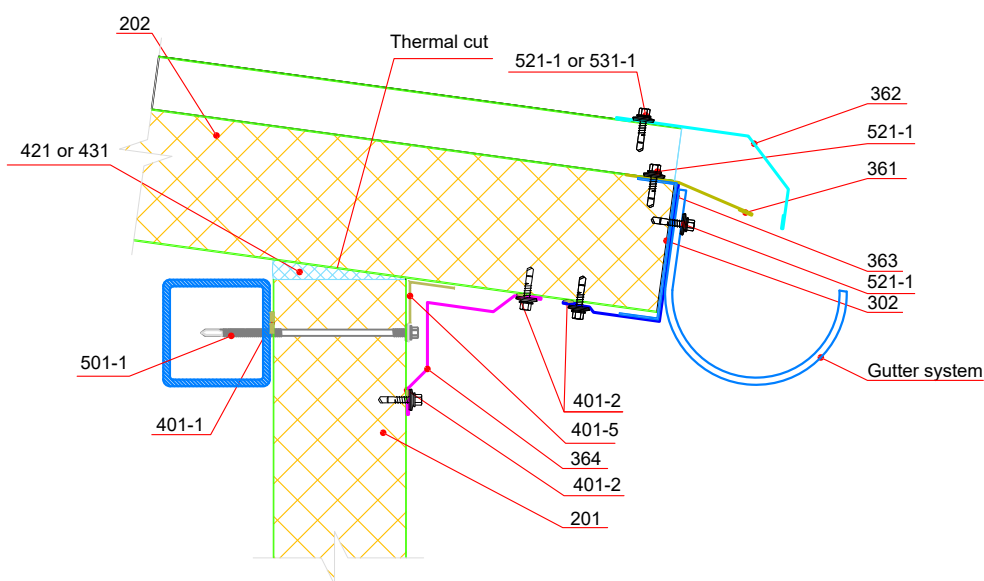
TENAX W H. Horizontal assembly. Fixing to steel column  
at internal corner (Flashings).

Detail type:

Wall

Scale:  
1:5

Date:  
January 2019



Code	Description
<input checked="" type="checkbox"/> 201	Wall panels TENAX W H
<input checked="" type="checkbox"/> 202	Roof panels TENAX TR
<input type="checkbox"/> 302	Gutter bearing profile, UD
<input type="checkbox"/> 361	Eave trim, MF
<input type="checkbox"/> 362	Eave flashing for trapezoidal profile edge, EF
<input type="checkbox"/> 363	Eave flashing for trapezoidal profile edge, NF
<input type="checkbox"/> 364	Eave flashing for roof and wall connection, RWF
<input type="checkbox"/> 401-1	Sealing tape, one-side self adhering, thickness t=3 mm, width b=30 mm
<input type="checkbox"/> 401-2	Sealing tape, one-side self adhering, thickness t=3 mm, width b=9 mm
<input type="checkbox"/> 401-5	Acrylic sealing tape, b=60mm
<input type="checkbox"/> 411-1	Construction sealant (neutral) (Outside neutral silicone/inside butil sealant, white color)
<input type="checkbox"/> 421	Mineral wool, in strips
<input type="checkbox"/> 431	Installation foam
<input type="checkbox"/> 501-1	Screws for panel fastening, self-drilling, for steel structures with web thickness up to 12 mm (c/c ≤ 500 mm)
<input type="checkbox"/> 521-1	Screws for fixing of flashings to panels (c/c ≤ 500 mm)
<input type="checkbox"/> 531-1	Rivets for fixing of flashings to panels, with organic coating (c/c ≤ 300 mm)
<input checked="" type="checkbox"/>	Included in the supply

Copyright of TENAXPANEL Ltd, allowed to be used only for installation of products manufactured by TENAXPANEL Ltd  
Designer is responsible for any changes in details!



"TENAXPANEL" Ltd  
Spodribas street 1, Dobeles, LV-3701, Latvia  
Phone: +371 63720957

Detail number:  
SP-493-1-en

Detail name:

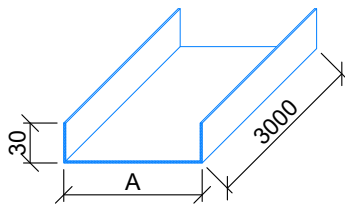
TENAX W H. Horizontal assembly.  
Eave connection.

Detail type:  
Roof

Scale:  
1:5

Date:  
January 2019

Code	Description
302	Bearing profile, UD



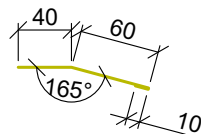
Steel sheet thickness 1,5 mm

Coating: Zinc Z275

Length: 3,0 m

Panel thickness	50	80	100	120	150	175	200	240	300
A*	54	84	104	124	154	179	204	244	304
Steel sheet width	114	144	164	184	214	239	264	304	364

Code	Description
361	Eave trim, MF



Steel sheet thickness 0,5; 0,6 mm

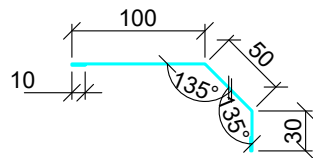
Coating: the same as panel coating

Length: 2,4 m

Steel sheet width 111

\* Other widths possible by individual request

Code	Description
362	Eave flashing for trapezoidal profile edge, EF



Steel sheet thickness 0,5; 0,6 mm

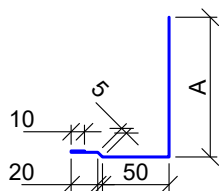
Coating: the same as panel coating

Length: 2,4 to 3,0 m

Steel sheet width 202

\* Other widths possible by individual request

Code	Description
363	Eave flashing for trapezoidal profile edge, NF



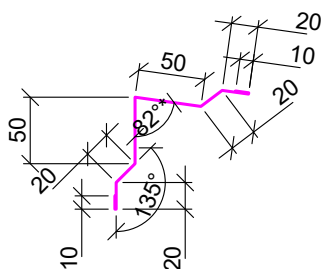
Steel sheet thickness 0,5; 0,6 mm

Coating: the same as panel coating

Length: 2,4 m

Panel thickness	50	80	100	120	150	175	200	240	300
A	55	85	105	125	155	175	205	245	305
Steel sheet width	141	171	191	211	241	266	291	331	391

Code	Description
364	Eave flashing for roof and wall connection, RWF



Steel sheet thickness 0,5; 0,6 mm

Coating: the same as panel coating

Length: 2,4 m

Steel sheet width 202

\* Other angles possible by individual request



"TENAXPANEL" Ltd  
Spodribas street 1, Dobeles, LV-3701, Latvia  
Phone: +371 63720957

Detail number:  
SP-493-1-en

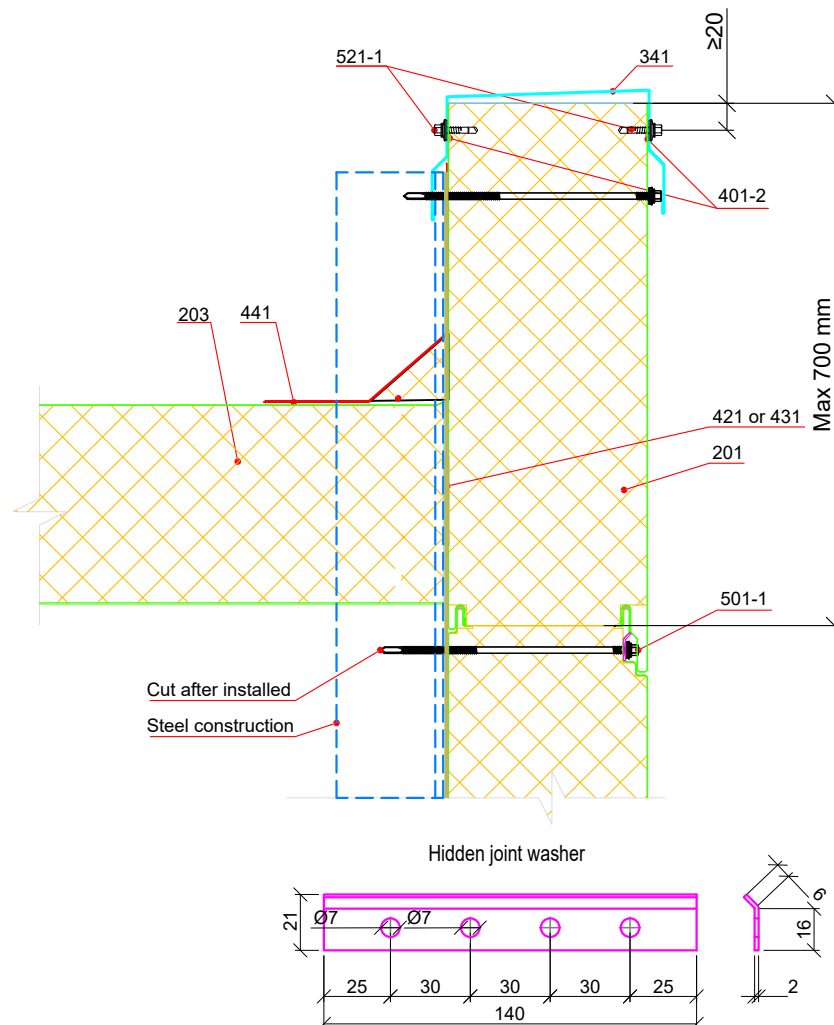
Detail name:

TENAX W H. Horizontal assembly.  
Eave connection (Flashings).

Detail type:  
Vertical installation

Scale:  
1:5

Date:  
January 2019



NOTE! EPDM washer has to be taken away from screw (501-1).

Code	Description
<input checked="" type="checkbox"/> 201	Wall panels TENAX W H
<input checked="" type="checkbox"/> 203	TENAX TR; TENAX R
<input type="checkbox"/> 341	Parapet cap, RF
<input type="checkbox"/> 401-1	Sealing tape, one-side self adhering, thickness t=3 mm, width b=30 mm
<input type="checkbox"/> 401-2	Sealing tape, one-side self adhering, thickness t=3 mm, width b=9 mm
<input type="checkbox"/> 411-1	Construction sealant (neutral) (Outside neutral silicone/inside butil sealant, white color)
<input type="checkbox"/> 421	Mineral wool, in strips
<input type="checkbox"/> 431	Installation foam
<input type="checkbox"/> 441	Membrane roofing material
<input type="checkbox"/> 501-1	Screws for panel fastening, self-drilling, for steel structures with web thickness up to 12 mm (c/c ≤ 500 mm)
<input type="checkbox"/> 521-1	Screws for flashing fixing to panels, self-drilling (c/c ≤ 500 mm)
<input type="checkbox"/> 531-1	Rivets for fixing of flashings to panels, with organic coating (c/c ≤ 300 mm)
<input checked="" type="checkbox"/>	Included in the supply



"TENAXPANEL" Ltd  
Spodribas street 1, Dobeles, LV-3701, Latvia  
Phone.: +371 63720957

Detail number:  
SP-494-1-en

Detail name:

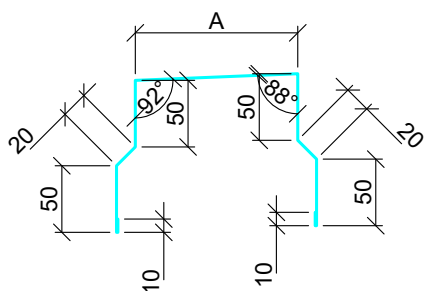
TENAX W H. Horizontal assembly.  
Wall parapet.

Detail type:  
Roof

Scale:  
1:5

Date:  
January 2019

Code	Description
341	Parapet cap, RF



Steel sheet thickness 0,5; 0,6 mm  
Coating: the same as panel coating  
Length: 2,4 m

Panel thickness	50	80	100	120	150	175	200	240	300
A	52	82	102	122	152	177	202	242	302
Steel sheet width	314	344	364	384	414	439	464	504	564

\* Other widths possible by individual request



"TENAXPANEL" Ltd  
Spodribas street 1, Dobeles, LV-3701, Latvia  
Phone: +371 63720957

Detail number:  
SP-494-1-en

Detail name:

TENAX W H. Horizontal assembly.  
Wall parapet (Flashings).

Detail type:  
Roof

Scale:  
1:5

Date:  
January 2019