

Code	Description
<input checked="" type="checkbox"/> 201	Wall panels TENAX W
<input type="checkbox"/> 322	External corner flashing, DF
<input type="checkbox"/> 327	Corner flashing, LF
<input type="checkbox"/> 401-2	Sealing tape, one-side self adhering, thickness t=3 mm, width b=9 mm
<input type="checkbox"/> 421	Mineral wool, in strips
<input type="checkbox"/> 431	Installation foam
<input type="checkbox"/> 521-1	Screws for fixing of flashings to panels (c/c ≤ 500 mm)
<input checked="" type="checkbox"/>	Included in the supply

Detail is without support structures; only for flashing placement



"TENAXPANEL" Ltd
Spodribas street 1, Dobeles, LV-3701, Latvia
Phone: +371 63720957

Detail number:
SP-430-1-en

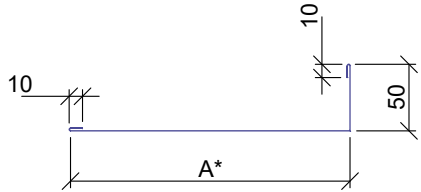
Detail name:
TENAX W.
External corner connection. Internal walls. Vertical assembly.

Detail type:
Internal walls

Scale:
1:5

Date:
January 2019

Code	Description
322	Corner flashing, DF

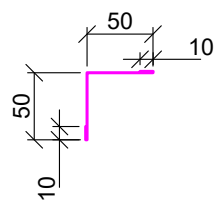


Steel sheet thickness 0,5; 0,6 mm
 Coating: the same as panel coating
 Length: 2,4 m

Panel thickness	50	80	100	120	150	175	200	240	300
A*	110	140	160	180	210	235	260	300	360
Steel sheet width	180	210	230	250	280	305	330	370	430

* Other widths possible by individual request

Code	Description
327	Corner flashing, LF



Steel sheet thickness 0,5; 0,6 mm
 Coating: the same as panel coating
 Length: 2,4 m

A*	50	75	100	150
Steel sheet width	120	170	220	320

* Other widths possible by individual request

Copyright of TENAXPANEL Ltd. allowed to be used only for installation of products manufactured by TENAXPANEL Ltd. Designer is responsible for any changes in details!



"TENAXPANEL" Ltd
 Spodribas street 1, Dobeles, LV-3701, Latvia
 Phone: +371 63720957

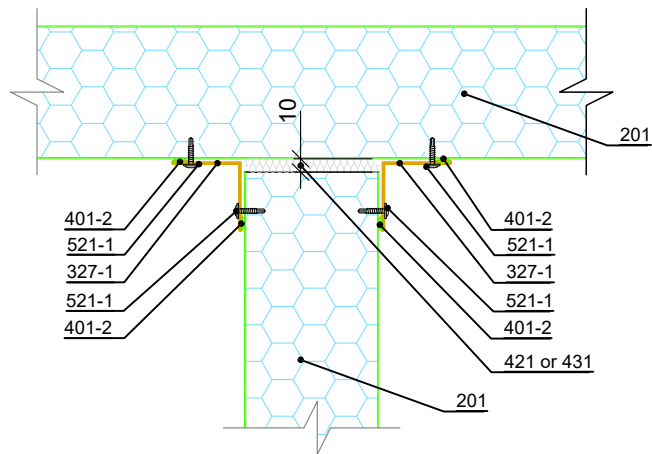
Detail number:
SP-430-1-en

Detail name:
TENAX W.
 External corner connection. Internal walls. Vertical assembly.
 (Flashings)

Detail type:
 Internal walls

Scale:
 1:5

Date:
 January 2019



Code	Description
<input checked="" type="checkbox"/> 201	Wall panels TENAX W
<input type="checkbox"/> 327-1	Internal corner flashing, LF
<input type="checkbox"/> 401-2	Sealing tape, one-side self adhering, thickness t=3 mm, width b=9 mm
<input type="checkbox"/> 421	Mineral wool, in strips
<input type="checkbox"/> 431	Installation foam
<input type="checkbox"/> 521-1	Screws for fixing of flashings to panels (c/c ≤ 500 mm)
<input checked="" type="checkbox"/>	Included in the supply
Detail is without support structures; only for flashing placement	



"TENAXPANEL" Ltd
Spodribas street 1, Dobele, LV-3701, Latvia
Phone: +371 63720957

Detail number:
SP-431-1-en

Detail name:

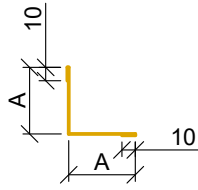
TENAX W.
T junction detail for internal walls.

Detail type:
Internal walls

Scale:
1:5

Date:
January 2019

Code	Description
327-1	Internal corner flashing, LF



Steel sheet thickness 0,5; 0,6 mm
 Coating: the same as panel coating
 Length: 2,4 m

A*	50	75	100	150
Steel sheet width	120	170	220	320

* Other widths possible by individual request

Copyright of TENAXPANEL Ltd. allowed to be used only for installation of products manufactured by TENAXPANEL Ltd. Designer is responsible for any changes in details!



"TENAXPANEL" Ltd
 Spodribas street 1, Dobele, LV-3701, Latvia
 Phone.:+371 63720957

Detail name:

TENAX W. - Vertical facade.
 T junction detail. (Flashings)

Detail number:

SP-431-1-en

Detail type:

Internal walls

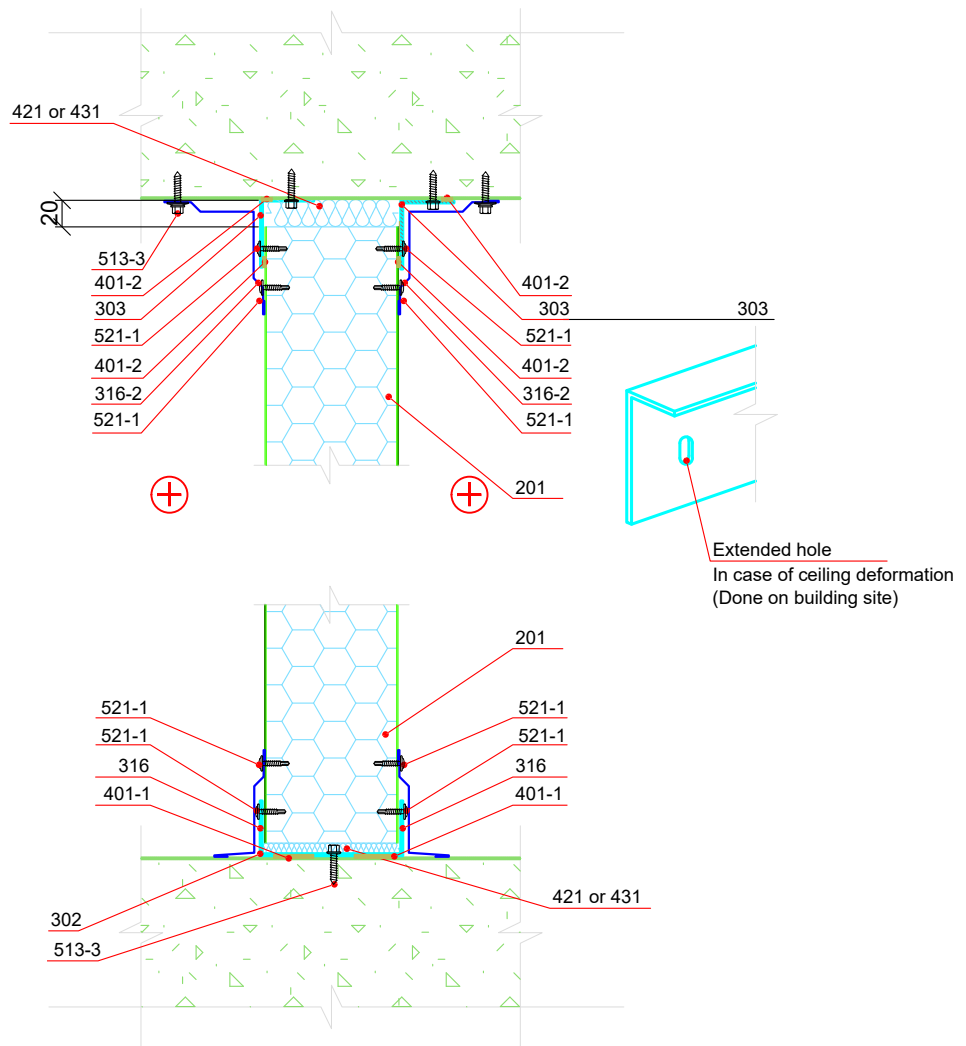
Scale:

1:5

Date:

January 2019

Copyright of TENAXPANEL Ltd. allowed to be used only for installation of products manufactured by TENAXPANEL Ltd
 Designer is responsible for any changes in details!



Code	Description
<input checked="" type="checkbox"/> 201	Wall panels TENAX W
<input type="checkbox"/> 302	Bearing profile, UD
<input type="checkbox"/> 303	Support profile, UL
<input type="checkbox"/> 316	Skirting, KF
<input type="checkbox"/> 316-2	Skirting, KF-2
<input type="checkbox"/> 401-1	Sealing tape, one-side self adhering, thickness t=3 mm, width b=30 mm
<input type="checkbox"/> 401-2	Sealing tape, one-side self adhering, thickness t=3 mm, width b=9 mm
<input type="checkbox"/> 421	Mineral wool, in strips
<input type="checkbox"/> 431	Installation foam
<input type="checkbox"/> 513-3	Screws for fixing of details to concrete structure (c/c ≤ 500 mm)
<input type="checkbox"/> 521-1	Screws for fixing of flashings to panels (c/c ≤ 500 mm)
<input checked="" type="checkbox"/>	Included in the supply



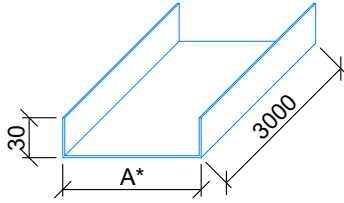
"TENAXPANEL" Ltd
 Spodribas street 1, Dobeles, LV-3701, Latvia
 Phone: +371 63720957

Detail number:
 SP-435-1-en

Detail name:
 TENAX W.
 Internal wall connection to the ground and ceiling - Option 1

Detail type: Internal walls	Scale: 1:5	Date: January 2019
--------------------------------	---------------	-----------------------

Code Description
 302 Bearing profile, UD

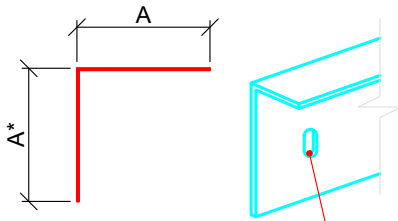


Steel sheet thickness 1,5 mm
 Coating: Zinc Z275
 Length: 3,0 m

Panel thickness	50	80	100	120	150	175	200	240	300
A*	54	84	104	124	154	179	204	244	304
Steel sheet width	114	144	164	184	214	239	264	304	364

* Other widths possible by individual request

Code Description
 303 Support profile, UL



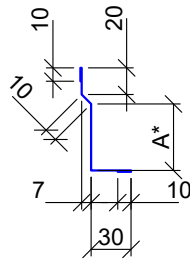
Steel sheet thickness 1,5 mm
 Coating: Zinc Z275
 Length: 3,0 m

A	50	75	100	125	150	200
Steel sheet width	100	150	200	250	300	400

* Other widths possible by individual request

Extended hole (done on building site)
 In case of ceiling deformation

Code Description
 316 Skirting, KF

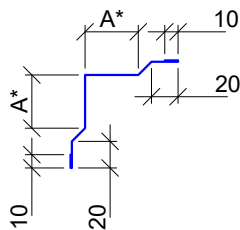


Steel sheet thickness 0,5; 0,6 mm
 Coating: the same as panel coating
 Length: 2,4 m

A*	50	60	80
Steel sheet width	132	142	162

* Other widths possible by individual request

Code Description
 316-2 Skirting, KF-2



Steel sheet thickness 0,5; 0,6 mm
 Coating: the same as panel coating
 Length: 2,4 m

A*	40	60	80
Steel sheet width	170	210	250

* Other widths possible by individual request

Copyright of TENAXPANEL Ltd. allowed to be used only for installation of products manufactured by TENAXPANEL Ltd. Designer is responsible for any changes in details!



"TENAXPANEL" Ltd
 Spodribas street 1, Dobeles, LV-3701, Latvia
 Phone: +371 63720957

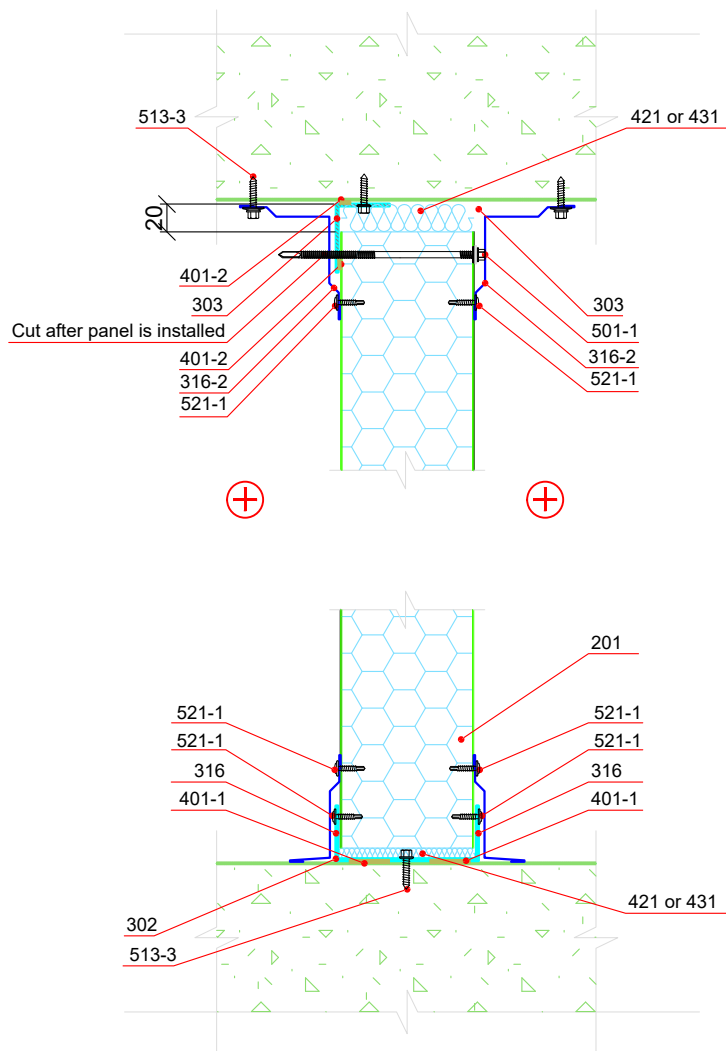
Detail number:
 SP-435-1-en

Detail name:
 TENAX W.
 Internal wall connection to the ground and ceiling - Option 1(Flashings)

Detail type:
 Internal walls

Scale:
 1:5

Date:
 January 2019



Code	Description
<input checked="" type="checkbox"/>	201 Wall panels TENAX W
<input type="checkbox"/>	302 Bearing profile, UD
<input type="checkbox"/>	303 Support profile, UL
<input type="checkbox"/>	316 Support profile, KF
<input type="checkbox"/>	316-2 Support profile, KF-2
<input type="checkbox"/>	401-1 Sealing tape, one-side self adhering, thickness t=3 mm, width b=30 mm
<input type="checkbox"/>	401-2 Sealing tape, one-side self adhering, thickness t=3 mm, width b=9 mm
<input type="checkbox"/>	421 Mineral wool, in strips
<input type="checkbox"/>	431 Installation foam
<input type="checkbox"/>	501-1 Screws for panel fastening, self-drilling, for steel structures with web thickness up to 12 mm (c/c ≤ 500 mm)
<input type="checkbox"/>	513-3 Screws for fixing of details to concrete structure (c/c ≤ 500 mm)
<input type="checkbox"/>	521-1 Screws for fixing of flashings to panels (c/c ≤ 500 mm)
<input checked="" type="checkbox"/>	Included in the supply



"TENAXPANEL" Ltd
 Spodribas street 1, Dobele, LV-3701, Latvia
 Phone: +371 63720957

Detail number:
SP-435-2-en

Detail name:

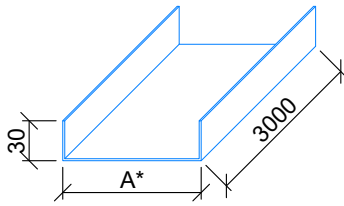
TENAX W.
 Internal wall connection to the ground and ceiling - Option 2

Detail type:
 Internal walls

Scale:
 1:5

Date:
 January 2019

Code	Description
302	Bearing profile, UD

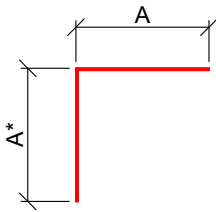


Steel sheet thickness 1,5 mm
 Coating: Zinc Z275
 Length: 3,0 m

Panel thickness	50	80	100	120	150	175	200	240	300
A*	54	84	104	124	154	179	204	244	304
Steel sheet width	114	144	164	184	214	239	264	304	364

* Other widths possible by individual request

Code	Description
303	Support profile, UL

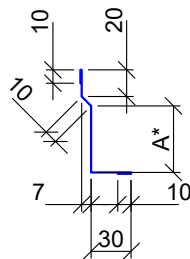


Steel sheet thickness 1,5 mm
 Coating: Zinc Z275
 Length: 3,0 m

A	50	75	100	125	150	200
Steel sheet width	100	150	200	250	300	400

* Other widths possible by individual request

Code	Description
316	Skirting, KF

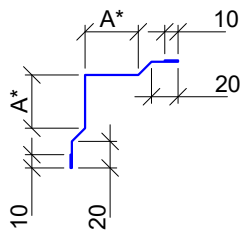


Steel sheet thickness 0,5; 0,6 mm
 Coating: the same as panel coating
 Length: 2,4 m

A*	50	60	80
Steel sheet width	132	142	162

* Other widths possible by individual request

Code	Description
316-2	Skirting, KF-2

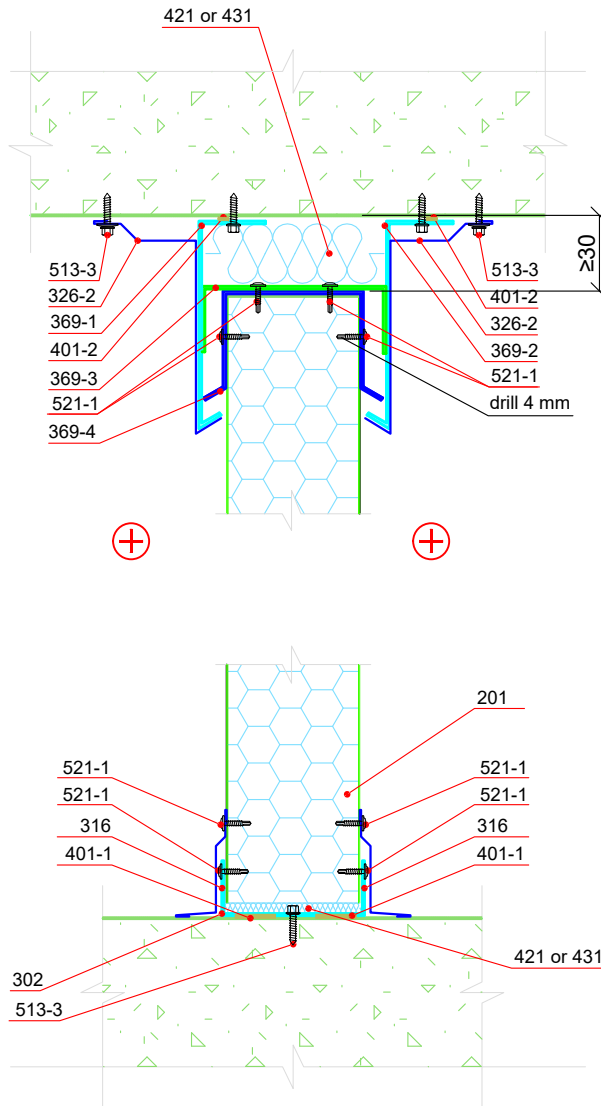


Steel sheet thickness 0,5; 0,6 mm
 Coating: the same as panel coating
 Length: 2,4 m

A*	40	60	80
Steel sheet width	170	210	250

* Other widths possible by individual request





Code	Description
<input checked="" type="checkbox"/>	201 Wall panels TENAX W
<input type="checkbox"/>	302 Bearing profile, UD
<input type="checkbox"/>	316 Support profile, KF
<input type="checkbox"/>	326-2 Internal corner flashing, IF-2
<input type="checkbox"/>	401-1 Sealing tape, one-side self adhering, thickness t=3 mm, width b=30 mm
<input type="checkbox"/>	401-2 Sealing tape, one-side self adhering, thickness t=3 mm, width b=9 mm
<input type="checkbox"/>	421 Mineral wool, in strips
<input type="checkbox"/>	431 Installation foam
<input type="checkbox"/>	513-3 Screws for fixing of details to concrete structure (c/c ≤ 500 mm)
<input type="checkbox"/>	521-1 Screws for fixing of flashings to panels (c/c ≤ 500 mm) In colour of the flashing
<input type="checkbox"/>	369-1 Support profile, ZN1
<input type="checkbox"/>	369-2 Support profile, ZN2
<input type="checkbox"/>	369-3 Support profile, ZN3
<input type="checkbox"/>	369-4 Support profile, ZN4
<input checked="" type="checkbox"/>	Included in the supply



"TENAXPANEL" Ltd
Spodribas street 1, Dobele, LV-3701, Latvia
Phone: +371 63720957

Detail number:
SP-435-3-en

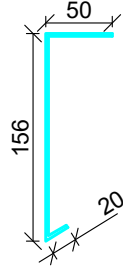
Detail name:
TENAX W.
Internal wall connection to the ground and ceiling (sliding joint) -
Option 3

Detail type:
Internal walls

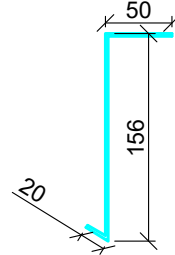
Scale:
1:5

Date:
January 2019

Code	Description
369-1	Support profile, ZN1

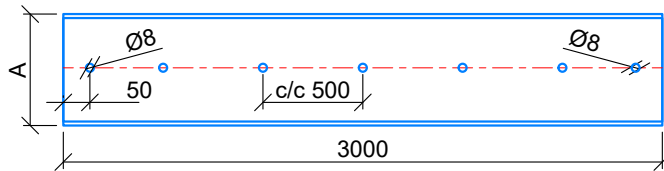
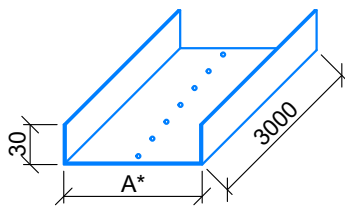


Code	Description
369-2	Support profile, ZN2



Steel sheet thickness 3.0 mm
 Coating: Zinc Z275
 Length: 3,0 m
 * Other widths possible by individual request

Code	Description
302	Bearing profile, UD

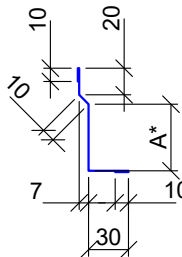


Steel sheet thickness 1,5 mm
 Coating: Zinc Z275
 Length: 3,0 m

Panel thickness	50	80	100	120	150	175	200	240	300
A*	54	84	104	124	154	179	204	244	304
Steel sheet width	114	144	164	184	214	239	264	304	364

*Predrilled holes are optionally available

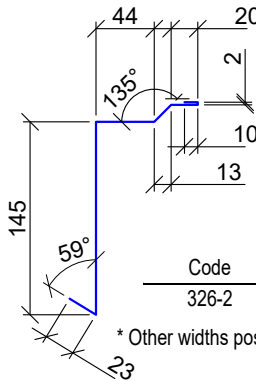
Code	Description
316	Skirting, KF



Steel sheet thickness 0,5; 0,6 mm
 Coating: the same as panel coating
 Length: 2,4 m

A*	50	60	80
Steel sheet width	132	142	162

* Other widths possible by individual request

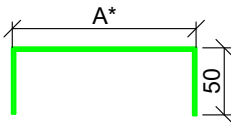


Steel sheet thickness 0,5; 0,6 mm
 Coating: the same as panel coating
 Length: 2,4 m

Code	Description
326-2	Internal corner flashing, IF-2

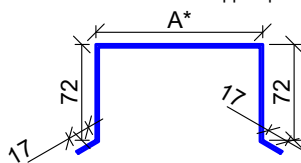
* Other widths possible by individual request

Code	Description
369-3	Support profile, ZN3



Steel sheet thickness 3.0 mm
 Coating: Zinc Z275
 Length: 1.19 m
 A - according to panel thickness

Code	Description
369-4	Support profile, ZN4



Steel sheet thickness 2.0 mm
 Coating: Zinc Z275
 Length: 1.19 m
 A - according to panel thickness
 * Other widths possible by individual request

Copyright of TENAXPANEL Ltd. allowed to be used only for installation of products manufactured by TENAXPANEL Ltd. Designer is responsible for any changes in details!



"TENAXPANEL" Ltd
 Spodribas street 1, Dobeles, LV-3701, Latvia
 Phone: +371 63720957

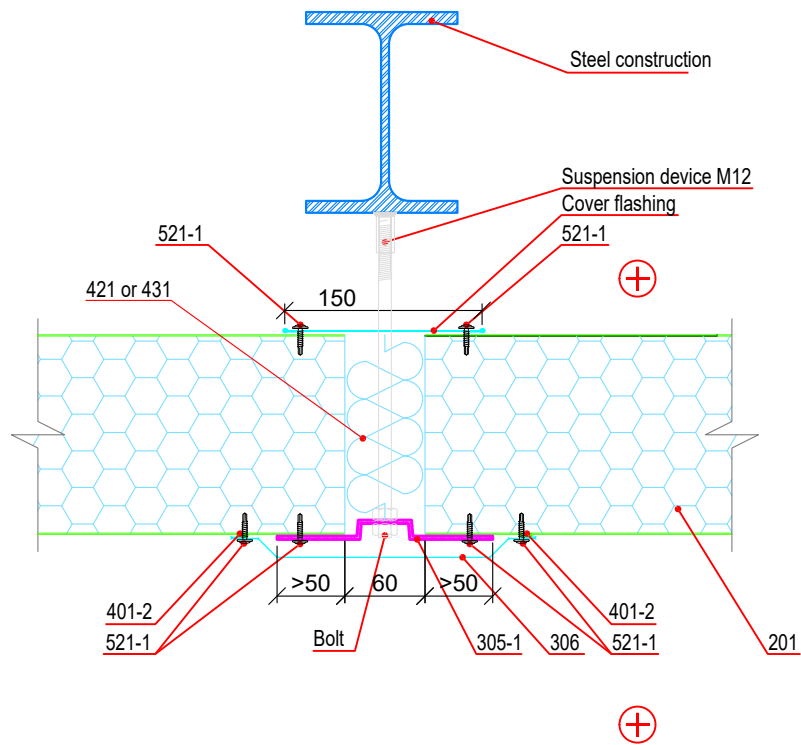
Detail number:
SP-435-3-en

Detail name:
TENAX W.
 Internal wall connection to the ground and ceiling (sliding joint) -
 Option 3 (Flashings)

Detail type:
 Internal walls

Scale:
 1:5

Date:
 January 2019



Copyright of TENAXPANEL Ltd. allowed to be used only for installation of products manufactured by TENAXPANEL Ltd. Designer is responsible for any changes in details!

Code	Description
<input checked="" type="checkbox"/> 201	Ceiling panels TENAX W
<input type="checkbox"/> 305-1	Fixing profile, UM1
<input type="checkbox"/> 306	Butt joint flashing for ceiling panels, AF
<input type="checkbox"/> 401-2	Sealing tape, one-side self adhering, thickness t=3 mm, width b=9 mm
<input type="checkbox"/> 421	Mineral wool, in strips
<input type="checkbox"/> 431	Installation foam
<input type="checkbox"/> 521-1	Screws for fixing of flashings to panels (c/c ≤ 500 mm)
<input checked="" type="checkbox"/>	Included in the supply



"TENAXPANEL" Ltd
Spodriibas street 1, Dobele, LV-3701, Latvia
Phone.:+371 63720957

Detail number:
SP-436-1-en

Detail name:

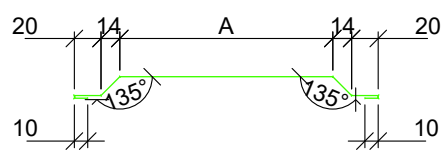
TENAX W.
Ceiling connection - Option 1

Detail type:
Internal walls

Scale:
1:5

Date:
January 2019

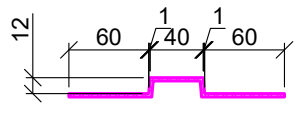
Code	Description
306	Butt joint flashing for ceiling panels, AF



Steel sheet thickness 0,5; 0,6 mm
 Coating: the same as panel coating
 Length: 2,4 m

A* 160
 Steel sheet width 260
 * Other widths possible by individual request



Code	Description
305-1	Fixing profile, UM1

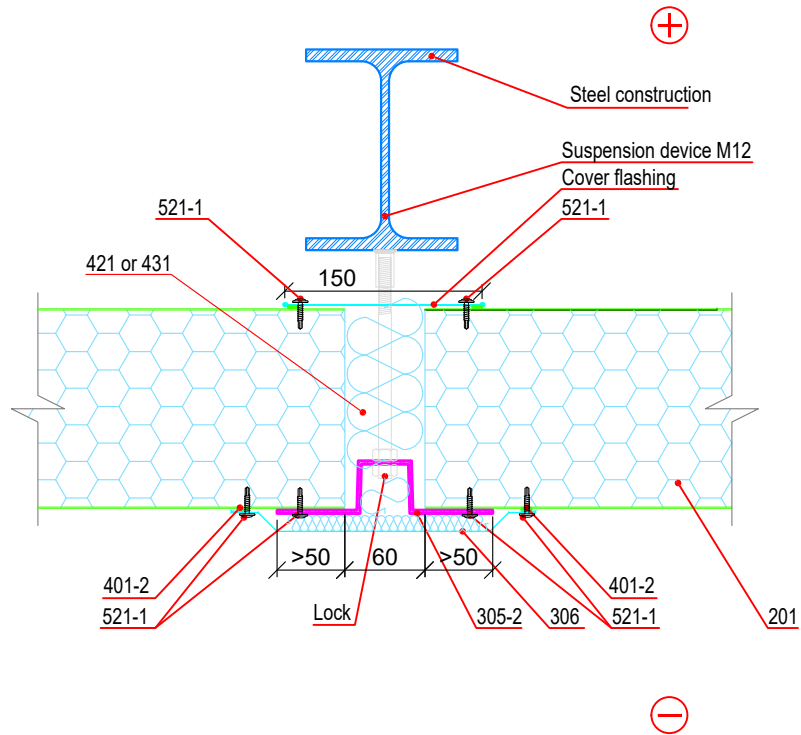


Steel sheet thickness 3,0 mm
 Coating: Zinc Z275
 Length: 3,0 m

Steel sheet width 184

Copyright of TENAXPANEL Ltd. allowed to be used only for installation of products manufactured by TENAXPANEL Ltd. Designer is responsible for any changes in details!

 	"TENAXPANEL" Ltd Spodribas street 1, Dobeles, LV-3701, Latvia Phone: +371 63720957	Detail name: TENAX W. Ceiling connection - Option 1(Flashings)		
	Detail number: SP-436-1-en	Detail type: Internal walls	Scale: 1:5	Date: January 2019



Copyright of TENAXPANEL Ltd. allowed to be used only for installation of products manufactured by TENAXPANEL Ltd. Designer is responsible for any changes in details!

Code	Description
<input checked="" type="checkbox"/> 201	Ceiling panels TENAX W
<input type="checkbox"/> 305-2	Fixing profile, UM2
<input type="checkbox"/> 306	Butt joint flashing for ceiling panels, AF
<input type="checkbox"/> 401-2	Sealing tape, one-side self adhering, thickness t=3 mm, width b=9 mm
<input type="checkbox"/> 421	Mineral wool, in strips
<input type="checkbox"/> 431	Installation foam
<input type="checkbox"/> 521-1	Screws for fixing of flashings to panels (c/c ≤ 500 mm)
<input checked="" type="checkbox"/>	Included in the supply



"TENAXPANEL" Ltd
Spodribas street 1, Dobele, LV-3701, Latvia
Phone.:+371 63720957

Detail number:
SP-436-2-en

Detail name:

TENAX W.
Ceiling connection - Option 2

Detail type:
Internal walls

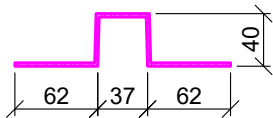
Scale:
1:5

Date:
January 2019

Code	Description
305-2	Fixing profile, UM2

Steel sheet thickness 3,0 mm
 Coating: Zinc Z275
 Length: 3,0 m

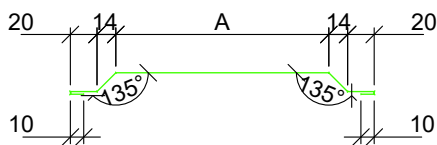
Steel sheet width 241



Code	Description
306	Butt joint flashing for ceiling panels, AF

Steel sheet thickness 0,5; 0,6 mm
 Coating: the same as panel coating
 Length: 2,4 m

A* 160
 Steel sheet width 260
 * Other widths possible by individual request



Copyright of TENAXPANEL Ltd. allowed to be used only for installation of products manufactured by TENAXPANEL Ltd. Designer is responsible for any changes in details!



"TENAXPANEL" Ltd
 Spodribas street 1, Dobeles, LV-3701, Latvia
 Phone: +371 63720957

Detail name:

TENAX W.
 Ceiling connection - Option 2(Flashings)

Detail number:

SP-436-2-en

Detail type:

Internal walls

Scale:

1:5

Date:

January 2019